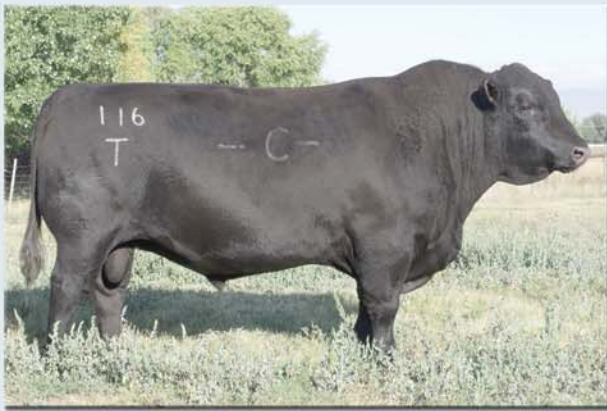
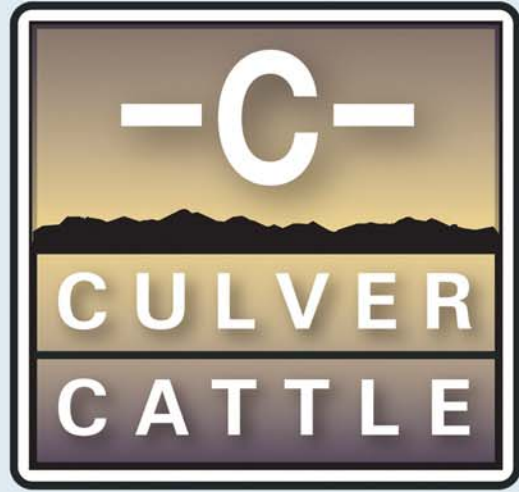




Mountain Pass



"Rib Eye"

1st Annual Bull Sale

Tuesday, March 29, 2011

Owl Creek Ranch • Walden, Colorado

Selling **67** AAA

ALTITUDE ADJUSTED ANGUS BULLS



Easy Fleshing • Superior Carcass • Moderate Frame • Feed Efficient • Raised at 8,200 Ft.

Reference Sires



Sinclair Mountain Pass 4P138

SINCLAIR MOUNTAIN PASS 4P138

4/18/04 • 15081884

Gardens Prime Time
N Bar Prime Time D806
 N Bar Miss Emulous A404

O C C Exodus 712E
N Bar Kinochtry Beauty V1490
 N Bar Kinochtry Beauty 4317

{ R R Traveler 5204
 { Green Garden Susie 1246
 { N Bar Emulation EXT Z52
 { N Bar Miss Emulation X3091
 { O C C Bonanza 880B
 { Dixie Erica of C H 1019
 { Leachman Bold Driver
 { N Bar Kinochtry Beauty 2414

PRODUCTION EPDS					CARCASS EPDS				\$ VALUE EPDS		
CED	BW	WW	YW	CEM MILK	CW	MARB	RE	FAT	SW	SF	SB
+5	+1.2	+35	+66	+5 +18	+9	+1.59	+1.08	+1.088	+23.86	+11.82	+30.83

This heavy muscled, high volume bull has become the cornerstone sire of the Culver Cattle breeding program. Mountain Pass has been the most widely used bull in our A.I. program; we are attracted to his ability to consistently produce low birth weight calves that are vigorous and grow rapidly. Currently there are over 200 Mountain Pass daughters in the Culver Cattle herd. They are all deep bodied, easy fleshing, structurally sound females with perfect udders and ample milk to wean heavy calves. Mountain Pass is the sire of the 2009, 2010 and 2011 Grand Champion carloads of commercial heifer calves at the National Western Stock Show. In addition to producing fantastic females, Mountain Pass also transmits feed efficiency and positive carcass traits. The 2007 steer calves sired by Mountain Pass graded 51% Prime 49% Choice with \$170.73 paid in premiums. Semen available – \$20.00 per straw (volume discounts available).



SVF Shamrock In Focus 116T "Rib Eye"

SVF SHAMROCK IN FOCUS 116T

1/27/01 • 15895211

S A F Focus of ER
Mytty In Focus
 Mytty Countess 906

Stevenson Maximum 42C
Shamrocks Clova Pride 172G
 Basin Clova Pride 6941

{ S A F Farms
 { G D A R Forevery Lady 246
 { Sitz Alliance 6595
 { Baldrige Countess 357
 { G T Maximum
 { J R S Elga 495R
 { P J M Montana Power 45
 { Basin Clova Pride 2312

PRODUCTION EPDS					CARCASS EPDS				\$ VALUE EPDS		
CED	BW	WW	YW	CEM MILK	CW	MARB	RE	FAT	SW	SF	SB
+13	-2.2	+46	+85	+12 +25	+20	+1.51	+1.21	+1.017	+31.83	+25.76	+53.33

"Rib Eye" is producing offspring true to his pedigree - low birth weights and explosive growth. The sons of "Rib Eye" offered in this sale are heavy muscled bulls with large scrotal circumferences. "Rib Eye" was the co-sire of the Grand Champion CCA carload of commercial heifer calves at the 2011 National Western Stock Show. Semen available – \$15.00 per straw (volume discounts available).



Redland Napoleon 2475

REDLAND NAPOLEAN 2475

7/7/05 • 15314879

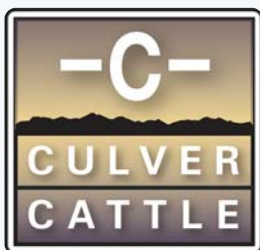
O C C Legend 616L
O C C Napoleon 649N
 O C C Dixie Erica 743L

Toebben Richt Tiem 057H
Redland Bonnie Bonnie 134Z
 Redland Bonnie Bell 706

{ O C C Emblazon 854E
 { O C C Blackbird 632J
 { O C C Headliner 661H
 { O C C Dixie Erica 639J
 { Leachman Right Time
 { V D A R Lucy 427
 { Paramount Ambush 2172
 { Redland Bonnie Bell 452

PRODUCTION EPDS					CARCASS EPDS				\$ VALUE EPDS		
CED	BW	WW	YW	CEM MILK	CW	MARB	RE	FAT	SW	SF	SB
+5	+1.9	+31	+61	+4 +17	+3	+1.05	+1.14	+1.017	+20.93	+8.69	+21.31

Napolean has been recognized as the bull to use on the cow families with heavy birth weights. He sires very small, attractive calves that grow rapidly. The Napolean daughters in production are deep bodied, heavy-made females with beautiful udders and plenty of milk. Napolean is the sire of the Grand Champion CCA carload of commercial heifer calves at the 2010 National Western Stock Show and the co-sire of the Grand Champion CCA carload of commercial heifer calves in 2011. Semen available – \$15.00 per straw (volume discounts available).



Culver Cattle 1st Annual Bull Sale

Tuesday, March 29, 2011 • 1 p.m. MDT

Owl Creek Ranch • Walden, Colorado

Offering 67  Altitude Adjusted Angus Bulls

Sale Day Phones:

Jon Gabel Cell: 303-594-5520
Greg Carter Cell: 970-620-1044
Neil Effertz Cell: 701-471-0153

*Join us for lunch before the sale, provided by the
North Park Stockgrowers/Cattle Women Cowherd.*

Directions to the sale site:

From Walden (Highway 125) Main Street to 5th Street turn east 3 ¼ mile to Owl Creek Ranch - North Ranch turn south (right) go 1.5 miles to sale barn. (5th Street will turn into County Road 12E) Sale Address is 3178 County Road 12E.

Special Representatives:

Curt Cox Cell 307-630-4604
Wyoming Livestock Roundup
Jim Gies Cell 970-590-0500 • Home 970-454-3836
Western Livestock Journal

Insurance:

Insurance will be available at the settlement desk.

Herd Vet:

Dr. Lanny Weddle D.V.M. 970-723-8314
Dr. Weddle has performed all PAP and fertility testing on the sale bulls.

PAP Testing:

The yearling bulls will be PAP tested at 8,200' and their PAP scores will be available sale day. The two 2-year-old bulls were PAP tested as yearlings and their scores appear in this catalog.

About the AAA Altitude Adjusted Angus Bulls

The commercial bulls selling are all out of 2-year-old first-calf heifers and backed by generations of A.I. matings. The sires used in the Culver Cattle A.I. program are owned by Culver Cattle and have been PAP tested at 8200'. The majority of these sires have lived and worked at Owl Creek Ranch. The sires of the sale bulls have also been PAP tested at 8200' and have lived and worked at Owl Creek Ranch.

We are confident that through generations of high altitude adaptation these bulls will be able to be put out with cows in any environment and perform during the breeding season. Furthermore, we are confident that these bulls will produce low birth weight calves that will be hardy and grow rapidly to make a profitable weaned calf.

The registered bulls in this offering stem from the successful 5N Ranch cow herd previously owned by Patty Lufkin, Saratoga, Wyo. This cow herd was developed through rigorous PAP testing and the use of popular A.I. sires. These bulls selling are the same quality that have sold in the past 5N Ranch bull sales.

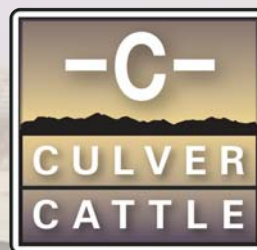
Culver Cattle "Pasture Fed" Bull Development Program

The bulls were weaned in late September and placed on pasture where they were supplemented with a pellet feed at the rate of one pound per hundred pounds of body weight. The bulls also received free choice grass hay. These bulls have never had whole corn or silage in their diet. This was to ensure that the bulls were to grow at a natural rate and reduce the risk of break down in the first breeding season.

The 2-year-old bulls were developed on the same principle and were used in breeding on both heifers and cows in the 2010 breeding season at Culver Cattle. These bulls are all trich tested. They have been on pasture all winter eating grass hay.



Sinclair Mountain Pass 4P138



7490 Clubhouse Road, Suite 201
Boulder CO 80301

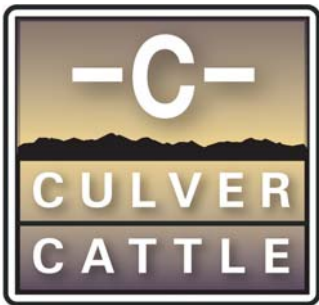
303-530-4444 • www.CulverCattle.com

Jon Gabel • 303-594-5520 • jon@culvercattle.com
Greg Carter • 970-620-1044 • greg@culvercattle.com



Sale Manager & Auctioneer
Auction Effertz, Ltd.

Your Market Masters • NEIL & JAN EFFERTZ
effertz@bektel.com • 17350 Hwy. 1804 N. • Bismarck, ND 58503
Ph: 701-223-5202 • Fax: 701-223-5458 • Cell: 701-471-0153
www.auctioneffertz.com



Lot 13 - A top weaning weight bull out of a Dateline dam. Excellent growth and ribeye on our pasture fed bull development program...protein supplement and hay!



Lot 51 - Check out this deep bodied, soggy "Rib Eye" son out of a Mountain Pass first-calf heifer.



Lot 32 - A nice made Predestined son out of a Sitz Alliance dam, this young late March bull has performed well among older bulls.

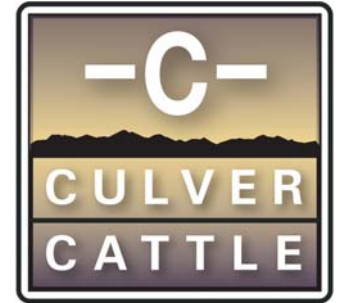
2-YEAR-OLD COMMERCIAL ANGUS BULLS

LOT	TAG	SIRE	MGS
1	W5-888	HD Dunn Great Plains 5086	Sinclair Mountain Pass 4P138
2	W9-895	Redland Napoleon 2475	Sinclair Mountain Pass 4P138
3	W10-887	Sinclair Mountain Pass 4P138	Shamrocks Right Time 1983
4	W9-891	Redland Napoleon 2475	Sinclair Mountain Pass 4P138
5	W7-889	SVF Shamrock In Focus 116T	Sinclair Mountain Pass 4P138
6	W10-885	Sinclair Mountain Pass 4P138	Shamrocks Right Time 1983
7	W9-892	Redland Napoleon 2475	Sinclair Mountain Pass 4P138
8	W5-897	HD Dunn Great Plains 5086	Sinclair Mountain Pass 4P138
9	W9-886	Redland Napoleon 2475	Shamrocks Right Time 1983
10	W10-890	Sinclair Mountain Pass 4P138	Shamrocks Right Time 1983
11	W10-882	Sinclair Mountain Pass 4P138	Shamrocks Right Time 1983

REGISTERED ANGUS YEARLING BULLS

LOT	TAG	SIRE	MGS
12	008	GAR High Design 367	B/R Destination 727-928
13	010	H A Image Maker 0415	Connealy Dateline
14	012	GAR High Design 367	GAR Expectation 4915
15	031	SAV 004 Predominant 4438	Bon View New Design 1407
16	034	Rito 2878 of 2536 BVND 878	GDAR Dutch 5226
17	042	SAV 004 Predominant 4438	VDAR Right Time 3134
18	044	SAV 004 Predominant 4438	B/R Precision Design 3121
19	047	GAR Predestined 577	B/R Recovery 980
20	051	GAR Predestined 577	Morgans Direction 111 9901
21	057	GAR Predestined 577	Vermilion Dateline 7078

Easy Flething - Superior Carcass - Moderate Frame - Feed Efficient - Raised and PAP Tested at 8,200'



Born	BW	WW	YW	Yrlg PAP	Current Scrotal	Lot				
2/5/09	67	602	1020	38	40.8	1				
2/2/09	68	620	1032	40	39	2				
2/7/09	74	652	1120	39	41.8	3				
2/10/09	68	616	1076	42	39	4				
2/4/09	86	683	1147	38	45	5				
2/12/09	70	608	1056	54	39	6				
2/11/09	66	632	1056	42	38.5	7				
2/14/09	58	598	1026	42	40.2	8				
2/25/09	56	604	1034	43	40.2	9				
2/12/09	80	624	1098	41	40.5	10				
2/15/09	76	618	1062	42	41	11				



Lot 18 - Here's a long-sided SAV 004 Predominant son with a 77# BW and excellent scrotal development.



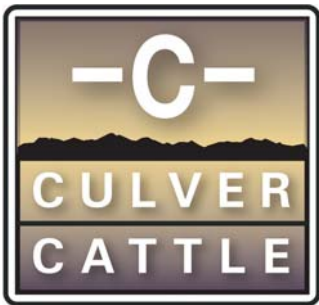
Lot 22 - Check out this real attractive Predestined 577 son out of a "Right Time" bred dam.

Born	BW	Oct. 6 WW	Feb. 12 YW	WDA	Rib Fat	REA	IMF	Jan. 8 REA/GWT	Feb. 12 SC	Lot
1/22/10	82	742	1270	3.07	0.09	11.4	2.48	1.01	35.5	12
1/23/10	76	804	1172	2.84	0.09	11.4	2.42	1.09	37	13
1/23/10	84	746	1146	2.75	0.15	11.4	3.64	1.15	33.5	14
1/29/10	72	734	1120	2.76	0.1	9.2	2.86	0.95	34.5	15
1/30/10	92	774	1126	2.73	0.13	11.3	2.75	1.14	37	16
2/3/10	90	750	1116	2.74	0.09	10.7	2.45	1.07	37.5	17
2/7/10	77	640	1074	2.68	0.12	9.7	2.93	1.07	37.5	18
2/16/10	72	696	1142	2.96	0.11	10.3	2.77	1.02	37.3	19
2/21/10	82	640	1024	2.64	0.09	11.8	1.89	1.3	34.5	20
2/23/10	77	636	1004	2.61	0.1	8.4	2.76	0.94	35.5	21



Lots 54 and 65 ~ Tested and ready to go to work at altitude or on the plains.

Easy Flething - Superior Carcass - Moderate Frame - Feed Efficient - Raised and PAP Tested at 8,200'



Lot 24 - A powerful, easy fleshing, well muscled GAR Predestined 577 son with a 38 cm scrotal measurement. He's a dandy!



Lot 33 - A low birthweight grandson of the popular calving ease bull Mytty In Focus out of a great Mountain Pass heifer. Big top and a 41.9 scrotal! We call his sire "Rib Eye."

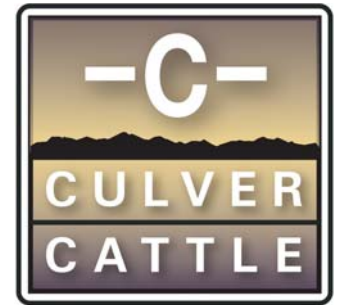


Lot 35 - Another real stout "Rib Eye" Mytty grandson out of a Mountain Pass daughter. Big scrotal and real stout - this is the Culver AAA program.

REGISTERED ANGUS YEARLING BULLS			
LOT	TAG	SIRE	MGS
22	058	GAR Predestined 577	VDAR Right Time 3134
23	064	GAR Predestined 577	Bon View New Design 878
24	065	GAR Predestined 577	VDAR Vision 243
25	067	GAR Predestined 577	VDAR Right Now 2151
26	069	GAR Predestined 577	B/R New Design 036
27	072	GAR Predestined 577	GAR Retail Product
28	077	GAR Predestined 577	CA Future Direction 5321
29	079	GAR Predestined 577	Bon View New Design 878
30	082	GAR Predestined 577	Ironwood New Level
31	084	GAR Predestined 577	JLB Exacto 416
32	085	GAR Predestined 577	Sitz Alliance 6595

COMMERCIAL ANGUS YEARLING BULLS			
LOT	TAG	SIRE	MGS
33	X7-75	SVF Shamrock In Focus 116T	Sinclair Mountain Pass 4P138
34	X10-302	Sinclair Mountain Pass 4P138	HD Dunn Great Plains 5086
35	X7-53	SVF Shamrock In Focus 116T	Sinclair Mountain Pass 4P138
36	X9-70	Redland Napoleon 2475	Sinclair Mountain Pass 4P138
37	X9-4	Redland Napoleon 2475	Sinclair Mountain Pass 4P138
38	X7-61	SVF Shamrock In Focus 116T	Sinclair Mountain Pass 4P138
39	X7-87	SVF Shamrock In Focus 116T	Sinclair Mountain Pass 4P138
40	X10-208	Sinclair Mountain Pass 4P138	Shamrocks Right Time 1983
41	X9-21	Redland Napoleon 2475	Sinclair Mountain Pass 4P138

Easy Fleshing - Superior Carcass - Moderate Frame - Feed Efficient - Raised and PAP Tested at 8,200'



Born	BW	Oct. 6 WW	Feb. 12 YW	WDA	Rib Fat	REA	IMF	Jan. 8 REA/CWT	Feb. 12 SC	Lot
2/24/10	88	650	1078	2.8	0.11	9.2	3.03	0.97	34.8	22
2/27/10	72	680	1018	2.7	0.13	10.2	3.71	1.11	32.5	23
3/2/10	82	650	1094	2.91	0.1	9.8	2.79	1.01	38	24
3/3/10	87	624	1068	2.83	0.13	9.4	3.19	0.99	35.5	25
3/6/10	78	686	1074	2.9	0.13	10.2	3.36	1.1	37	26
3/10/10	80	590	926	2.49	0.07	9.4	3.86	1.18	33	27
3/18/10	78	602	980	2.72	0.17	9.9	3.45	1.19	35.3	28
3/18/10	71	616	940	2.61	0.07	8.3	3.13	1	33.5	29
3/22/10	84	664	1060	2.97	0.11	9.3	2.92	1.04	36	30
3/26/10	81	590	928	2.62	0.07	8.7	2.79	1.09	37	31
3/26/10	83	620	1014	2.8	0.09	9.6	2.07	1.1	33	32
Born	BW	Oct. 6 WW	Feb. 12 YW	WDA	Rib Fat	REA	IMF	Jan. 8 REA/CWT	Feb. 12 SC	Lot
1/27/10	68	720	1158	2.87	0.2	10.6	3.85	1.03	41.9	33
1/28/10	70	776	1106	2.73	0.09	11.3	2.48	1.16	38.6	34
1/30/10	72	788	1182	3.02	0.21	11.9	2.71	1.13	43.7	35
1/30/2010	66	746	1122	2.79	0.14	10.9	2.45	1.1	38	36
2/1/10	60	656	1058	2.66	0.17	10.2	2.33	1.1	36.8	37
2/2/10	78	752	1134	2.82	0.19	12.1	3.34	1.24	37.5	38
2/3/10	70	692	1080	2.7	0.16	9	3.41	0.95	37.5	39
2/3/10	64	700	1062	2.67	0.11	10.4	2.29	1.12	36.5	40
2/5/10	62	720	1108	2.81	0.21	11.2	2.38	1.17	37.2	41



Lot 37 - Breeding heifers? This ultra low birth weight bull is deep ribbed, strong topped and "dog gentle."

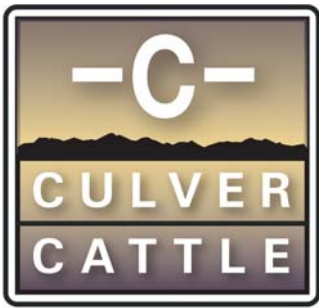


Lot 39 - This "Rib Eye" on Mountain Pass daughters deal really works...every time! Look at his birthweight and his length and his scrotal measurement!



Lot 41 - Here is one of the top ribeye measurements with a 1.17 REA per hundredweight and a real good looking rascal.

Easy Flething - Superior Carcass - Moderate Frame - Feed Efficient - Raised and PAP Tested at 8,200'



Lot 43 - A dandy Mountain Pass son out of a Shamrock's Right Time 2-year-old. 70# BW and 40.2 SC. He's a good ox.



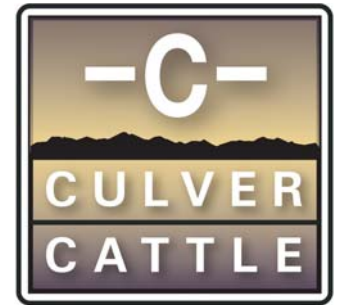
Lot 44 - One of the top weaning weight sons of Napoleon from a Mountain Pass heifer.



Lot 47 - Needing a heifer bull? Look at this super smooth, long sided, low birthweight Mountain Pass son with terrific ribeye area per hundredweight.

COMMERCIAL ANGUS YEARLING BULLS			
LOT	TAG	SIRE	MGS
42	X10-284	Sinclair Mountain Pass 4P138	Shamrocks Right Time 1983
43	X10-327	Sinclair Mountain Pass 4P138	Shamrocks Right Time 1983
44	X9-41	Redland Napoleon 2475	Sinclair Mountain Pass 4P138
45	X7-74	SVF Shamrock In Focus 116T	Sinclair Mountain Pass 4P138
46	X10-114	Sinclair Mountain Pass 4P138	HD Dunn Great Plains 5086
47	X10-128	Sinclair Mountain Pass 4P138	Shamrocks Advantage 1185
48	X10-178	Sinclair Mountain Pass 4P138	Shamrocks Advantage 1185
49	X10-183	Sinclair Mountain Pass 4P138	Shamrocks Right Time 1983
50	X7-2	SVF Shamrock In Focus 116T	Sinclair Mountain Pass 4P138
51	X7-3	SVF Shamrock In Focus 116T	Sinclair Mountain Pass 4P138
52	X10-143	Sinclair Mountain Pass 4P138	HD Dunn Great Plains 5086
53	X7-51	SVF Shamrock In Focus 116T	Sinclair Mountain Pass 4P138
54	X7-52	SVF Shamrock In Focus 116T	Sinclair Mountain Pass 4P138
55	X10-225	Sinclair Mountain Pass 4P138	Shamrocks Right Time 1983
57	X7-22	SVF Shamrock In Focus 116T	Sinclair Mountain Pass 4P138
58	X10-237	Sinclair Mountain Pass 4P138	SS New Design 036 9N1
59	X10-200	Sinclair Mountain Pass 4P138	Shamrocks Right Time 1983
60	X7-10	SVF Shamrock In Focus 116T	Sinclair Mountain Pass 4P138
61	X9-63	Redland Napoleon 2475	Sinclair Mountain Pass 4P138
62	X7-26	SVF Shamrock In Focus 116T	Sinclair Mountain Pass 4P138
63	X7-93	SVF Shamrock In Focus 116T	Sinclair Mountain Pass 4P138
64	X7-47	SVF Shamrock In Focus 116T	Sinclair Mountain Pass 4P138
65	X9-33	Redland Napoleon 2475	Sinclair Mountain Pass 4P138
66	X7-24	SVF Shamrock In Focus 116T	Sinclair Mountain Pass 4P138
67	X7-65	SVF Shamrock In Focus 116T	Sinclair Mountain Pass 4P138

Easy Flething - Superior Carcass - Moderate Frame - Feed Efficient - Raised and PAP Tested at 8,200'



Born	BW	Oct. 6 WW	Feb. 12 YW	WDA	Rib Fat	REA	IMF	Jan. 8 REA/CWT	Feb. 12 SC	Lot
2/6/10	68	698	1096	2.77	0.13	10.1	3.75	1.07	37.8	42
2/6/10	70	680	1130	2.86	0.16	11	2.97	1.08	40.2	43
2/7/10	70	716	1104	2.8	0.18	10.7	2.04	1.1	37	44
2/7/10	72	680	1130	2.87	0.13	10.6	3.97	1.1	36.5	45
2/8/10	67	656	1032	2.62	0.12	10	2.79	1.11	35.5	46
2/8/10	65	662	1034	2.63	0.11	10.5	2.85	1.16	38	47
2/9/10	64	662	990	2.54	0.11	9	3.04	1.03	43	48
2/9/10	72	660	1044	2.66	0.13	10.7	3.24	1.17	37	49
2/9/10	66	680	1052	2.7	0.11	9.4	3.32	1.02	37.5	50
2/10/10	78	630	1045	2.65	0.13	9.4	2.99	1.03	33.7	51
2/11/10	55	636	1022	2.65	0.09	8.7	4.58	0.99	38.7	52
2/11/10	72	680	1164	2.99	0.11	9.2	4.53	1.03	37	53
2/11/10	72	712	1130	2.9	0.11	11	3.41	1.12	37	54
2/13/10	74	644	1030	2.63	0.07	9.5	2.57	1.07	34.5	55
2/14/10	62	720	1084	2.82	0.14	10.8	3.85	1.09	38	57
2/15/10	64	678	1130	2.94	0.14	11.9	2.87	1.2	36.2	58
2/16/10	66	668	980	2.54	0.08	8.8	4.03	1.04	37.5	59
2/16/10	68	702	1090	2.84	0.16	10.8	4.1	1.12	38.5	60
2/18/10	72	636	980	2.53	0.13	10.2	2.2	1.19	34	61
2/18/10	67	670	1030	2.69	0.16	10.3	4.22	1.12	34	62
2/19/10	65	672	1086	2.85	0.13	9.2	3.44	0.96	36	63
2/19/10	67	690	1020	2.66	0.15	8.3	4.61	0.92	41	64
2/20/10	56	728	1102	2.93	0.13	10.3	3.17	1.1	33.4	65
2/24/10	67	670	1062	2.83	0.15	10.6	2.7	1.13	34.5	66
3/1/10	74	620	1002	2.67	0.1	10.8	2.38	1.22	36.4	67



Lot 57 - He's long. Look at this very low birthweight bull that started small but really grew out well as one of our top weaning weight calves with no creep feed.



Lot 65 - Low birth and excellent growth on this deep bodied, soggy Napoleon son. He gained well on our pasture fed bull development program...1% of their body weight in a protein pellet and hay out of a bale processor!



Lot 66 - A classic example of the "Rib Eye" X Mountain Pass combination. He's deep, long, easy fleshing, low birthweight and won't fall apart!

Easy Fleshing - Superior Carcass - Moderate Frame - Feed Efficient - Raised and PAP Tested at 8,200'

Real-World Performance

Terms & Conditions



Average January 2011 Scan Data

35 AAA

Commercial Bulls

Avg. Wt:..... 936#

Avg Rib Fat:..... 0.14

Avg. REA:..... 10.2

Avg. Marbling:..... 3.22

22 AAA

Registered Bulls

Avg Wt:..... 924#

Avg Rib Fat:..... 0.11

Avg REA:..... 9.9

Avg. Marbling..... 2.91

Eating 10# pellets and free choice grass hay on pasture.

46 Commercial Angus Heifers

3/4 sisters to the bulls in this sale

Avg. Wt:..... 773#

Avg. Rib Fat:..... 0.22

Avg REA:..... 9.2

Avg Marbling:..... 5.36

Eating silage, distillers grains and ground hay.

Terms: Terms of the sale are cash or check payable immediately upon conclusion of the sale and before animals will be moved. Seller reserves the right to require a certified check as settlement before releasing any cattle.

Guarantee: All bulls selling are covered by the Culver Cattle guarantee. If a bull purchased from Culver Cattle breaks down or is injured during the first breeding season and is unable to perform breeding service, have the bull examined by a veterinarian and submit a written diagnosis of the injury to Culver Cattle. The bull will be sold for salvage with the salvage payment sent to Culver Cattle. In return Culver Cattle will give the bull buyer 100% credit on a bull in our next sale. In the case of death no credit will apply. We suggest placing insurance on your bulls purchased in case of death loss.

Insurance of Purchases and Risk: All animals are the seller's risk prior to their sale and become property of the buyer as soon as declared sold by the auctioneer. Arrangements will be made to have insurance available when making settlement.

Bidding: All animals sell to the highest bidder. Any disputes or challenges regarding bids will be settled by the auctioneer and his decision will be final.

Health and Export: Our herd vet will be on hand to write interstate health certificates.

Announcements: Any errors or changes of information contained in the catalog will be announced from the auction block and such announcements shall take precedence over information contained in the catalog.

Liabilities: All persons who attend the sale do so at their own risk and Culver Cattle or Auction Effertz, Ltd. assume no liability for any accidents that may occur. Neither does Culver Cattle or Auction Effertz, Ltd. assume any liability for loss or injury to livestock due to theft, mysterious disappearance, sickness, improper handling or Act of God. It is also to be clearly understood that Auction Effertz, Ltd. act only as a medium between the buyer and the seller. They are not responsible in any way for any failure on the part of the buyer and the seller to live up to their obligations for the truth of any warranties or representations, express or implied. Neither does Auction Effertz, Ltd., assume any financial obligation to collect or enforce collection of monies between parties. Any legal action that may in exceptional cases be taken, must be between the buyer and the seller.

Contract: The above terms and conditions shall constitute a contract between the buyer and the seller of each animal sold.

Mail bid: Mail or wire bids may be furnished. Bids must be in the hands of the sale manager in ample time prior to the sale and will be handled in strict confidence.

Culver Cattle Females



Culver Cattle won Grand Champion honors again this year at the National Western Stock Show 2011 Commercial Heifer Pen Show.

Culver Cattle also won Grand Champion honors at the 2011 Colorado Cattlemen's Producer Show.



Culver Cattle has established a reputation for extremely high quality AAA Altitude Adjusted Angus replacement females that are sold each year by private treaty. These cattle for the past 7 years have been evaluated by a panel of the most reputable livestock judges in America, winning 11 banners (9 Grand Champion and 2 Reserve Grand Champion) at the prestigious National Western Stock Show Commercial Heifer Pen Show and the Colorado Cattle Association Producer Commercial Heifer Pen Show. While they have been very successful at the NWSS Pen Show, they are not "show heifers". They have been raised, developed and evaluated with the needs of the commercial cattleman in mind. These are the kind of cattle - easy fleshing and structurally correct with good dispositions - that will work at altitude or on the plains.





Culver Cattle
7490 Clubhouse Road, Suite 201
Boulder CO 80301
www.CulverCattle.com

PRESORTED
STANDARD
US POSTAGE
PAID
BISMARCK, ND
PERMIT #256

Culver Cattle 1st Annual Bull Sale

Tuesday, March 29, 2011

Owl Creek Ranch • Walden, Colorado

Selling **67** **AAA**

ALTITUDE ADJUSTED ANGUS BULLS



Easy Fleshing • Superior Carcass • Moderate Frame • Feed Efficient • Raised at 8,200 Ft.